

DRIESCHER - Air-Insulated Medium-Voltage Switchgears

- Type W 12 - 607519
- Type W 12 - 757521
- Type W 12 - 907521
- Rated voltage 12 kV
- Rated current up to 630 A



W 12

ELEKTROTECHNISCHE WERKE
FRITZ DRIESCHER & SÖHNE GMBH

D-85366 MOOSBURG • TEL. +49 87 61 6 81-0 • FAX +49 87 61 68 11 37
<http://www.driescher.com> infoservice@driescher.de



DRIESCHER - 12 kV Switchgears

in compliance with EN 62271-200

• 2	General, Operating conditions, Technical standards
• 3	Technical data, Description of the switch panels
• 4	Overview of switch panel variants W 12 - 607519, W 12 - 757521 and 907521
• 5	Panel variants W 12 - 607519
• 9	Panel variants W 12 - 757521 and W 12 - 907521
• 11	Insulating protective barrier, Auxiliary equipment, Weights
• 12	Production program

General

The metal-encapsulated, air-insulated medium-voltage switchgears, Type W 12 are for universal application:

They range from compact ring cable switchgears up to complex power distribution switchgears.

Tailored to meet the needs of public utility networks and power supply companies in industry and municipal buildings.

These medium-voltage switchgears meet the user's specific requirements in full and ensure a satisfactory power distribution.

The W 12 standard panel types are available in three different dimensional sizes:

- 1. W 12 - 607519; W x D x H: 600 x 750 x 1900 mm.**
- 2. W 12 - 757521; W x D x H: 750 x 750 x 2100 mm.**
- 3. W 12 - 907521; W x D x H: 900 x 750 x 2100 mm.**

They are available as individual panels or as a combined switchgear, where the equipment, panel sequence etc. can be determined by the customer.

Operating Conditions

The switch panels of Type W 12 are installed in closed electrical operating areas which are only to be entered by skilled personnel and appropriately instructed persons.

The equipment can be used at an altitude of up to 1000 m above sea level.

For installations above an altitude of 1000 m the rated insulating level of the switchgear must be corrected accordingly. The switch panels are designed for use under normal operating conditions in compliance with the standard EN 62271-1.

Technical Standards

The design of the air-insulated switch panels corresponds to the specifications of the EN 62271-200. The resistance to accidental arcs of the switch panels has been determined at 16 kA and 20 kA; 1 s, by and independent testing institute. The installed switchgear equipment is designed in compliance with EN 62271-1.

The degree of protection of the switch panels corresponds to IP 3X.

Technical data on the installed switchgear equipment are available for

- Switch-disconnector H 22 in list 722
- Earthing and disconnecting switches in list 731
- Circuit breakers V ... in list 747

Technical Data

Rated voltage	U_r 12 kV	Rated short-circuit duration	t_k 1 s
Rated lightning impulse withstand voltage	U_p 75 kV	Rated frequency	f_r 50 Hz
Rated short-time withstand voltage	U_d 28 kV		

Technical data for the installed switchgear equipment	Rated (operating) current I_r	Rated short-time current I_k	Rated peak current I_p
Panels with circuit breaker V 12	630 A	20 kA	50 kA
Panels with switch-disconnector H22	630 A	20 kA	50 kA

Benefits

- **Reliable** and safe based on the high quality of our products
- **Economical** through continuous further development
- **Flexible**
- **Compact design**
- **Easy handling**
- **Minimum amount of maintenance**

Description of the Switch Panels

Design

The air-insulated medium-voltage switch panels of Type W 12 with a panel width of 600 mm, 750 mm and 900 mm are metal-encapsulated.

The switch panel frame is made of a screwed, hot-galvanized composite structure.

The front of the switch panels has a single-wing door of steel sheet with door hinge optionally on the right or left. A window of compound glass is inserted in the door.

The cover in front of the bus bar compartment is either screwed on or designed as a door for the relay box positioned behind it.

Each switch panel has a screwed on rear panel of galvanized sheet metal.

Connecting cables are conducted into the switch panels from below and are mounted on cross rails which can be adjusted in two dimensions.

The doors and covers of the switchgear are painted in structural paint (available in different colours according to the customer's request).

Equipment

The switch panels of Type W 12 are available in the following versions:

- Cable switch panel Type WK 12
- Transformer feeder panel Type WT 12
- Measuring switch panel Type WM 12
- Bus sectionalizer panel Type WÜ 12
- Circuit-breaker panel Type WL 12

All switch panels are partitioned off from panel to panel, in the busbar area, by means of fibrous-glass reinforced plastic plates with lead-in openings.

Pressure relief can be in upward or downward direction.

Switch panels equipped with load-break switches can optionally be fitted with an earthing switch as well.

Integrated in the circuit-breaker panel, Type WL 12, there is also a bus disconnecter.

It is also possible to equip these panels with a set of current transformers and voltage transformers as well as with an earthing switch.

The optional interlocking of the equipment practically rules out any form of incorrect operation.

All built-in switchgear equipment can be operated manually or via motor-operated mechanisms when the panel door is closed.

The product program is completed by special measuring panels which are fitted with current and voltage transformers.

Earthing switches or spherical fixed points are available for earthing and short-circuiting.

An insulating protective barrier can be inserted when the panel door is closed.

It is possible to install appropriate surge voltage protectors in the panel, if required.

All switch panels are designed with central locking and double-bit key.

There are additional locking features available in the form of profile cylinders or padlocks, if required.

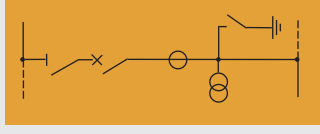
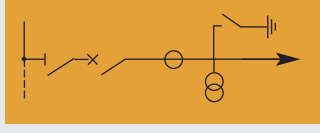
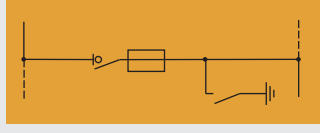
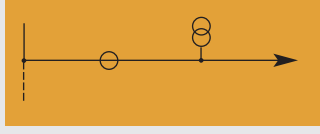
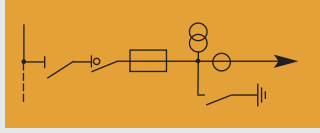
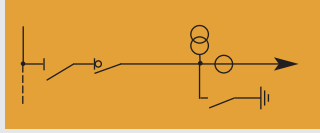
Air-Insulated Medium-Voltage Switch Panel 12 kV Type W 12 - 607519, Type W 12 - 757521 and Type W 12 - 907521



optional

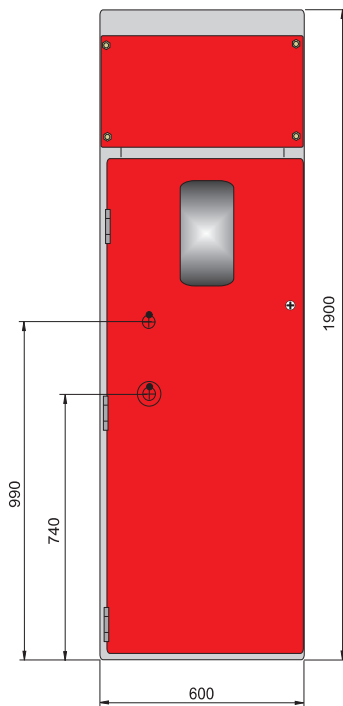
■ not possible

* not possible with current or voltage transformer



Switch Panel Type W 12 - 607519	Cable panel (WK) Fig. 2,3,4,13,14,15	Transformer feeder panel (WT) Fig. 5,6,18	Measuring panel (WM) Fig. 9,10,16,17	Bus sectionalizer panel (WU) Fig. 7,8,14,18	Circuit-breaker panel (WL) Fig. 11,12,19,20,21,22	Circuit-breaker bus sectionalizer panel (WÜL) Fig. 23,24
Disconnecting switch	optional	optional*	■	■	optional	optional
Switch-disconnector / Circuit breaker	H 22 EA/EK	H 22 SEA	■	H 22 EK/EA/SEA	V12 F / KUF	V12 F / KUF
Earthing switch	optional	optional	■	optional	optional	■
Current transformer	optional	optional	optional	■	optional	optional
Voltage transformer	optional	optional	optional	■	■	■
Switch Panel Type W 12 - 757521/907521						
Disconnecting switch	■	■	■	■	optional	optional
Switch-disconnector / Circuit breaker	H 22 EA/EK	H 22 SEA	■	H 22 EK/EA/SEA	V12 F / KUF	V12 F / KUF
Earthing switch	optional	optional	■	optional	optional	■
Current transformer	optional	optional	optional	■	optional	optional
Voltage transformer	optional	optional	optional	■	optional	■

Switch Panels Type W 12 - 607519



12 kV Switch panel according to drawing HA 2-070735

- Rated voltage 12 kV
- Rated (operating) current up to 630 A
- Rated insulation level 75 kV
- Resistance to accidental arcs 20 kA; 1 s

Fig. 1: 12 kV Switch panel - front view

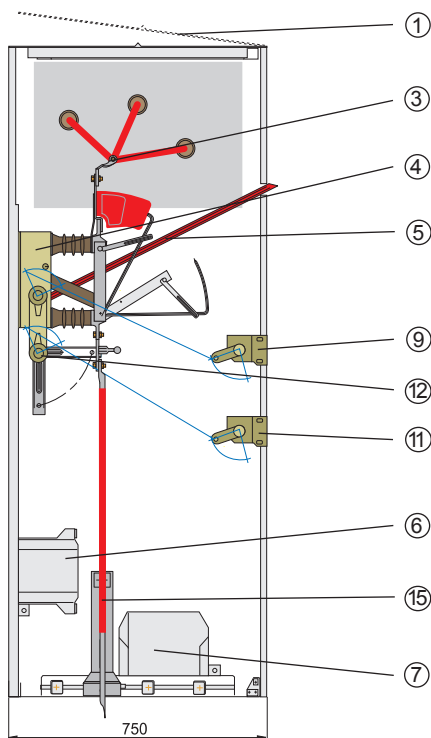


Fig. 2: 12 kV Cable panel with switch-disconnector H22 EA also possible with current and voltage transformer

- ① Pressure relief plate
- ② Relay box
- ③ Bus terminal
- ④ Switch-disconnector H 22
- ⑤ Insulating protective barrier*
- ⑥ Current transformer
- ⑦ Voltage transformer
- ⑧ Circuit breaker
- ⑨ Position indicator and actuation of load-break switch
- ⑩ Position indicator and actuation of disconnecting switch
- ⑪ Position indicator and actuation of earthing switch
- ⑫ Earthing switch
- ⑬ Disconnecting switch
- ⑭ HV-HBC fuse
- ⑮ Cable terminal

* The insulating protective barrier can be inserted when the switchgear unit is switched off.

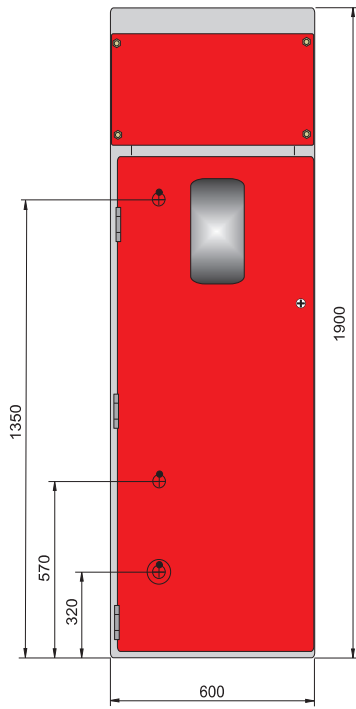


Fig. 3: Front view of 12 kV cable panel with switch-disconnector H 22 EA/EK and disconnecting switch

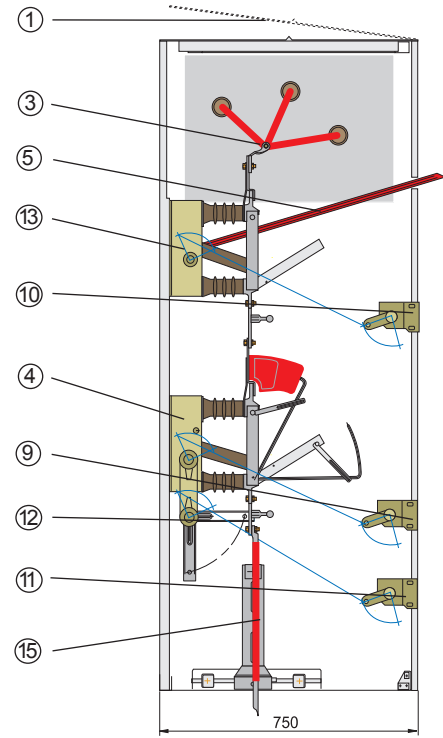


Fig. 4: Side view of 12 kV cable panel with switch-disconnector H 22 EA/EK and disconnecting switch

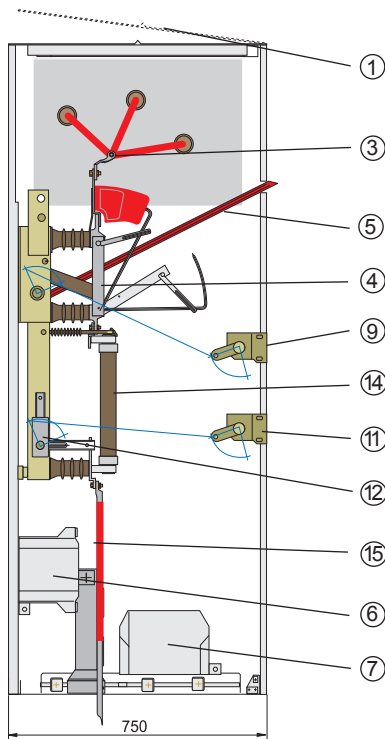


Fig. 5: 12 kV Transformer feeder panel with switch-disconnector H22 SEA, also possible with current and voltage transformer

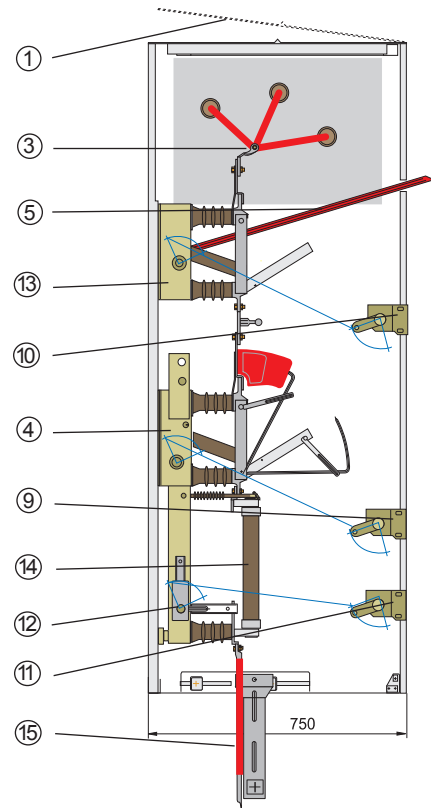


Fig. 6: 12 kV Transformer feeder panel with switch-disconnector H22 SEA and disconnecting switch

Switch Panels Type W 12 - 607519

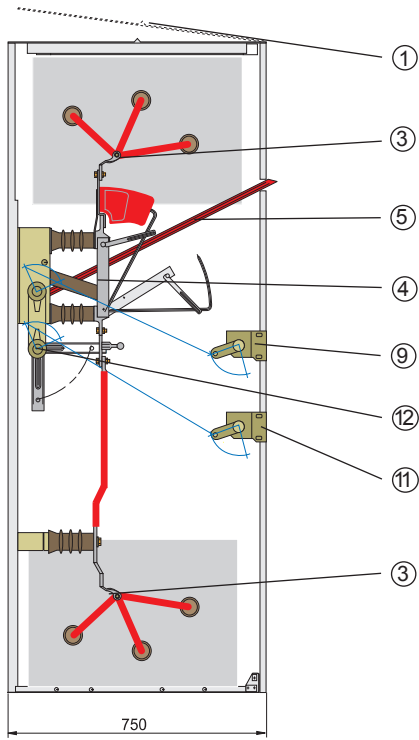


Fig. 7: 12 kV Bus sectionalizer panel with switch-disconnector H22 EAVEK

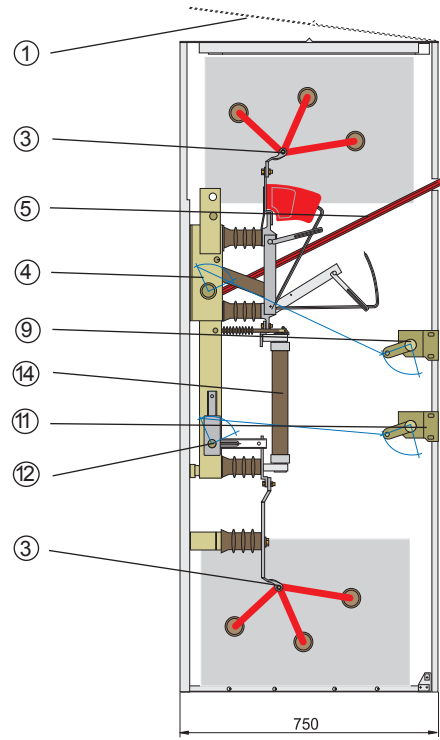


Fig. 8: 12 kV Bus sectionalizer panel with switch-disconnector H22 SEA

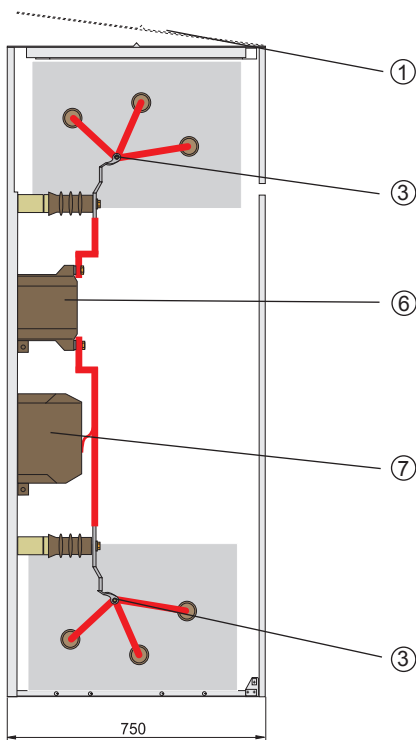


Fig. 9: 12 kV Measuring panel with current and voltage transformers

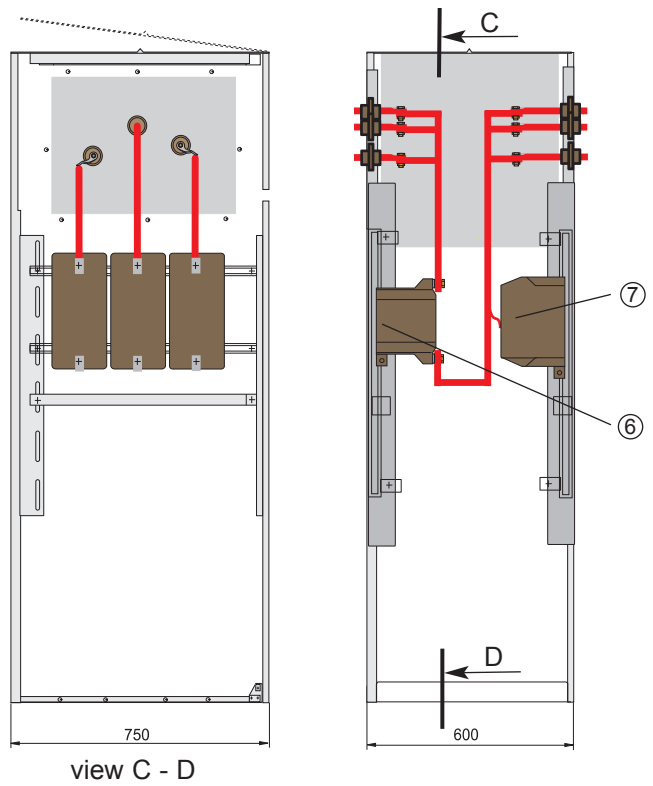


Fig. 10: 12 kV Measuring panel in longitudinal rails with current and voltage transformers Section C - D

Switch Panels Type W 12 - 607519

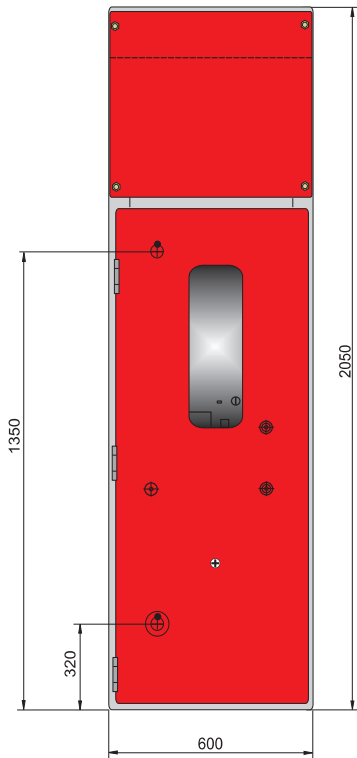


Fig. 11: Front view of 12 kV circuit-breaker panel with disconnecting switch

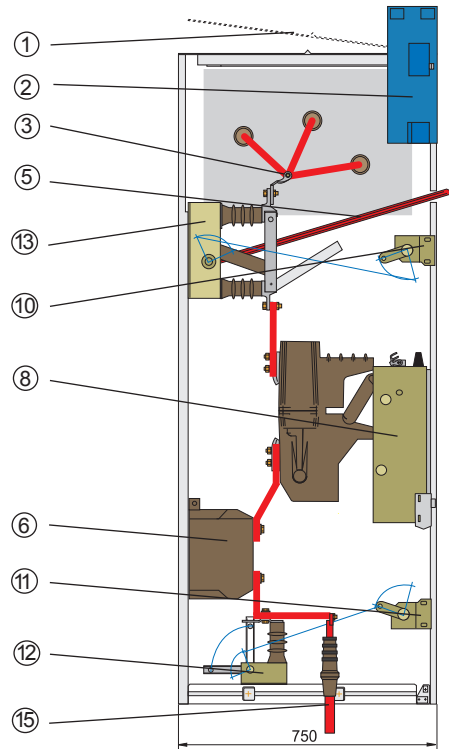


Fig. 12: Side view of 12 kV circuit-breaker panel with circuit breaker LS V12-630-20 KUF and disconnecting switch

INSTITUT „PRÜFFELD FÜR ELEKTRISCHE HOCHLEISTUNGSTECHNIK“ GMBH
 Unabhängiges, akkreditiertes Prüflaboratorium - Mitgliedsprüffeld bei STL und LOVAG

TYPPRÜFBERICHT

Nr. 1283.0345.6.086 AUFTRAGGEBER

Elektrotechnische Werke
 Fritz Driescher & Söhne GmbH
 Driescherstraße 3
 85368 Moosburg HERSTELLER

Elektrotechnische Werke
 Fritz Driescher & Söhne GmbH PRÜFOBJEKT

Metallgekapselte Wechselstrom-Schaltanlage TYP

W12-607519 FERTIGUNGS-NR.

Prüfmuster		12 kV	BEMESSUNGS-DATEN NACH ANGABEN DES AUFTRAGGEBERS
Bemessungs-Spannung	U _n	630 A	
Bemessungs-Betriebsstrom	I _n	50 kA	
Bemessungs-Stoßstrom	I _{st}	20 kA	
Bemessungs-Kurzzeitstrom	I _{kt}	3 s	

Bemessungs-Kurzschlussdauer IAC AFLR 20 kA 1 s

IEC 62271-200:2003-11 PRÜFVORSCHRIFT

Prüfung des Verhaltens bei inneren Fehlern UMFANG DER PRÜFUNG

16. März 2006 DATUM DER PRÜFUNG

Die den Umfang der Prüfung betreffenden Bemessungswerte des Prüfobjektes wurden nachgewiesen
 Die Prüfung wurde **BESTANDEN** PRÜFERGEBNIS

H. Glabusch *W. Moritz*
 H. GLABUSCH W. MORITZ
 Leiter Prüffelder Verantwortlicher Prüferingenieur
 Berlin, den 29. Juni 2006

Unabhängiges, akkreditiertes Prüflaboratorium, akkreditiert von der Deutschen Akkreditierungsstelle Techn. & Sachliche VZ für die Bereiche
 Industrieanlagenbau und -anlagen, Fernstudien und Laboranalen/Chemisches Nachweislaboratorium und Anlagen-
 messtechnik sowie Stahl-, Beton- und Holzbauteile.

IPH - LANDSBERGER ALLEE 378 - D-12681 BERLIN - TEL. 030/54 96 02 00 FAX 030/54 96 02 22
 DAT - P - 019/92

Switch Panels Type W 12 - 757521 and W 12 - 907521

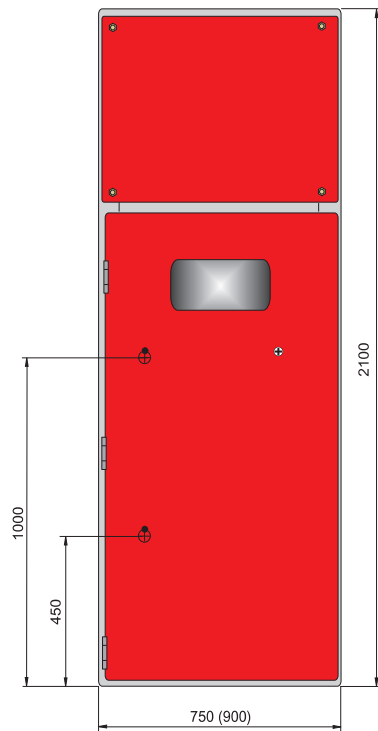


Fig. 13: Front view of 12 kV cable panel with switch-disconnector H 22 EK/EA

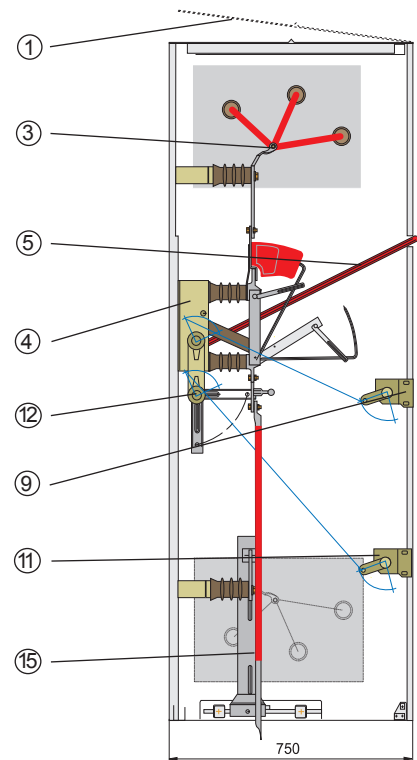


Fig. 14: 12 kV Cable panel (bus sectionalizer panel) with switch-disconnector H 22 EK/EA

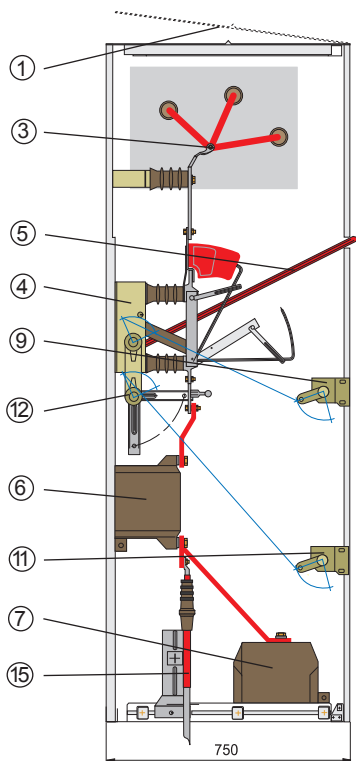


Fig. 15: 12 kV Cable panel with switch-disconnector H 22EK/EA, current and voltage transformer

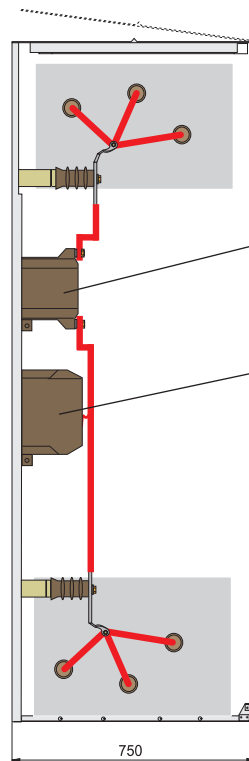


Fig. 16: 12 kV Measuring panel with current and voltage transformer

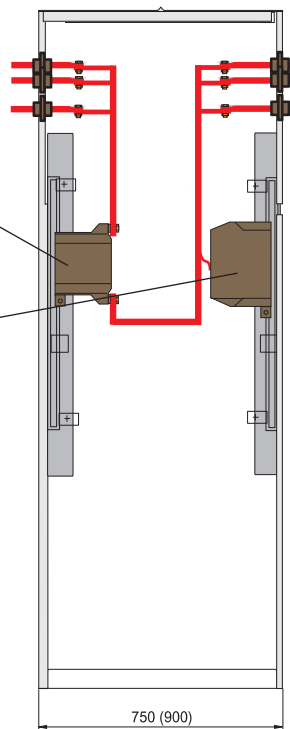


Fig. 17: 12 kV Measuring panel in longitudinal rails with current and voltage transformer

Switch Panels Type W 12 - 757521 and W 12 - 907521

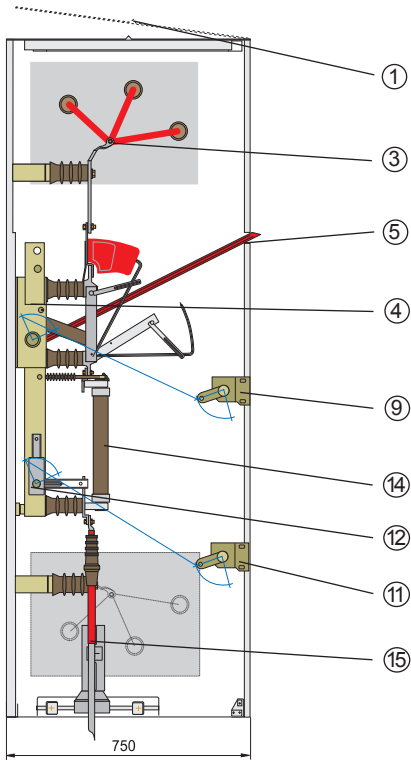


Fig. 18: 12 kV Transformer feeder panel (bus sectionalizer panel) with switch-disconnector H 22 SEA

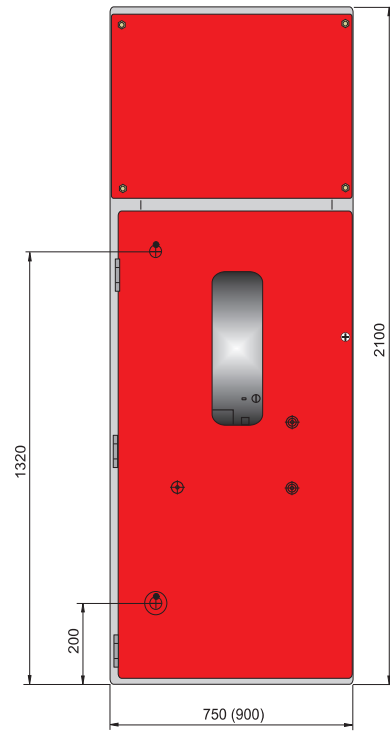


Fig. 19: Front view of 12 kV circuit-breaker panel

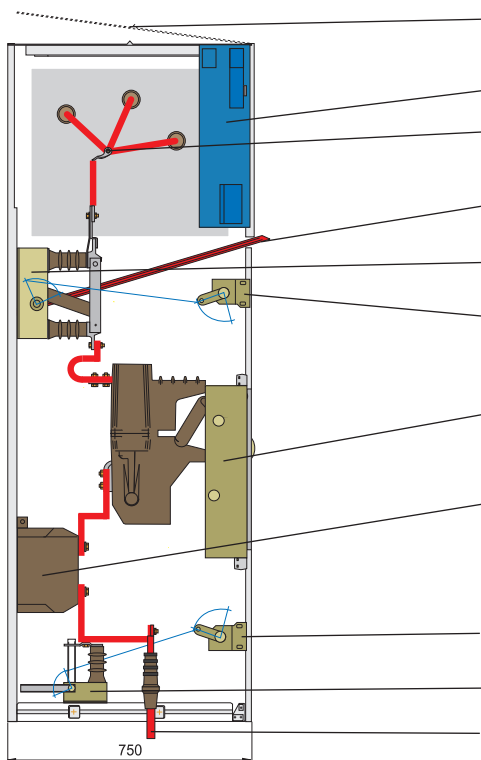


Fig. 21: 12 kV Circuit-breaker panel with circuit breaker V12-630-20 KUF

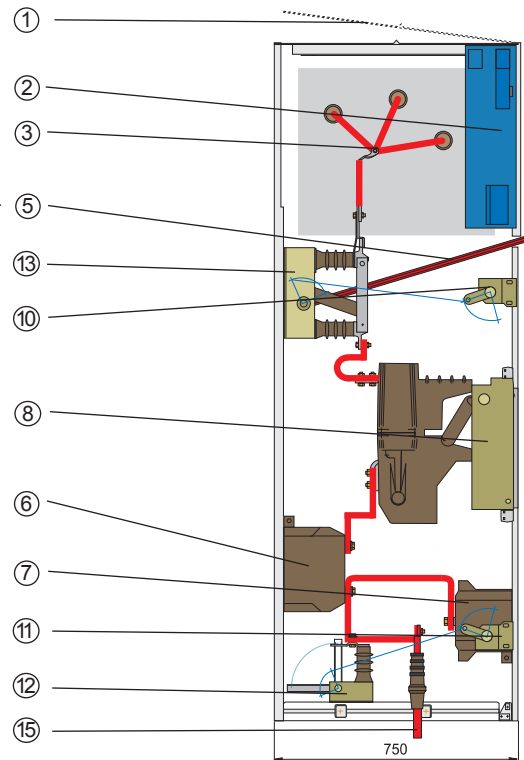


Fig. 22: 12 kV Circuit-breaker panel with circuit breaker V12-630-20 F

Switch Panels Type W 12 - 757521 and W 12 - 907521

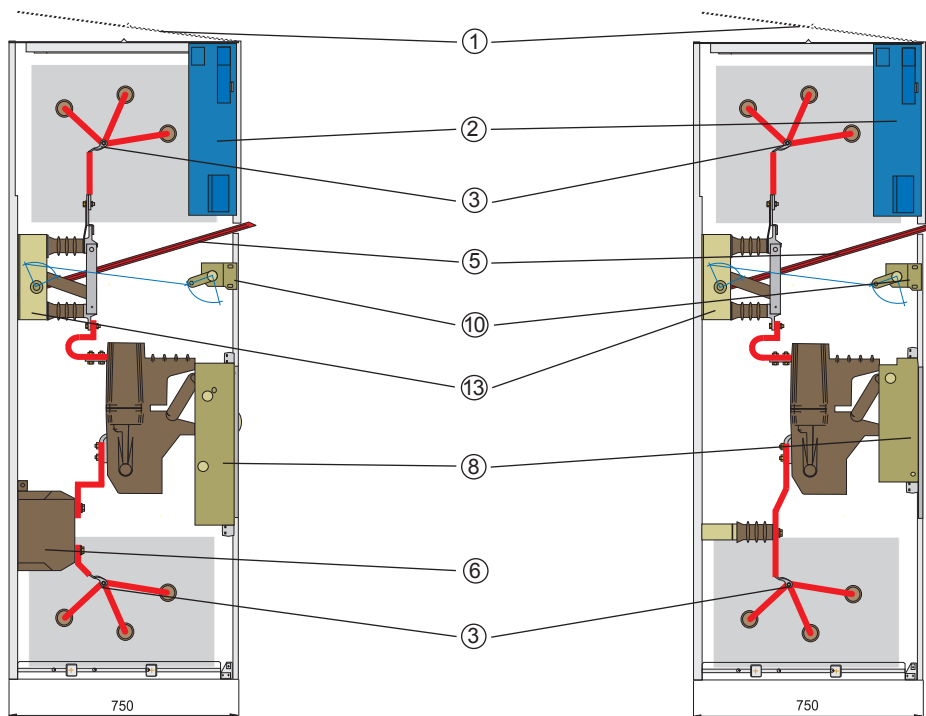


Fig. 23:
12 kV Bus sectionalizer/circuit-breaker panel
with circuit breaker V12-630-20 KUF

Fig. 24:
12 kV Bus sectionalizer/circuit-breaker panel
with LS V12-630-20 F

Insulating protective barrier

The insulated protective barrier is to prevent impermissible approach to live parts and unintentional contact with such parts. This barrier is to be inserted with

the panel door closed when work is to be carried out on the switch panel and the system cannot be switched completely dead.

Auxiliary Equipment

- Insulating protective barrier in compliance with DIN VDE 0682 Part 552
- Panel illumination
- Capacitive voltage testing system in compliance with (E) DIN VDE 0682 Part 415
- Additional locking systems with profile cylinder and lockable operating mechanisms
- Short-circuit indicator
- Floor coverings

Weights

Type	Designation	Weight approx. kg	Drawing-no.
WK 12-607519 - 22	Cable panel	245	HA2 - 070735
WT 12-607519 - 22	Transformer feeder panel	275	HA2 - 070735
WÜ 12-607519 - 22	Bus sectionalizer panel	300	HA2 - 070735
WM 12-607519	Measuring panel	240	HA2 - 070735
WL 12-607519 - V12	Circuit-breaker panel	350	HA2 - 070735
WK 12-757521 - 22	Cable panel	275	HA2 - 071124
WT 12-757521 - 22	Transformer feeder panel	305	HA2 - 071124
WÜ 12-757521 - 22	Bus sectionalizer panel	330	HA2 - 071124
WM 12-757521	Measuring panel	270	HA2 - 071124
WL 12-757521 - V12	Circuit-breaker panel	380	HA2 - 071124
WK 12-907521 - 22	Cable panel	290	HA2 - 070773
WT 12-907521 - 22	Transformer feeder panel	320	HA2 - 070773
WÜ 12-907521 - 22	Bus sectionalizer panel	345	HA2 - 070773
WM 12-907521	Measuring panel	285	HA2 - 070773
WL 12-907521 - V12	Circuit-breaker panel	395	HA2 - 070773

Our range of products includes:

Medium-voltage systems

- Single-bus and duplicate-bus switchgear
- Non-withdrawable, withdrawable, and truck-type units
- Compact switchgear assemblies
- Custom-made models
- Industrial systems

Medium-voltage switchgear

- Indoor switches, disconnectors, and earthing switches (single and triple pole)
- Indoor circuit breakers (vacuum)
- Outdoor switches (low oil content and vacuum)
- High-voltage high-breaking-capacity fuses

Low-voltage systems

- Open-framework design
- Enclosed break devices (up to 6.300 A)
- Cable and fixed-station distribution cabinets

Low-voltage switchgear

- Switch disconnectors
- Switch and fuse blocks
- Low-voltage high-breaking-capacity fuses

Driving gear

- Hand-operated and motor-operated mechanisms
- Indoor and outdoor driving gear

Accessories

- For medium and low voltages
- For station equipment
- Insulators (0.5 kV - 38.5 kV)
- Plastic and glass-reinforced plastic screening

Dimensions, weights , diagrams and descriptions in the list are non-binding. Subject to change without notice.

switching • electricity • safety

ELEKTROTECHNISCHE WERKE FRITZ DRIESCHER & SÖHNE GMBH

D-85366 MOOSBURG • TEL. +49 87 61 6 81-0 • FAX +49 87 61 68 11 37
<http://www.driescher.com> infoservice@driescher.de

